

GH2315E3_{BRAND}

NEW

RM:
2.3



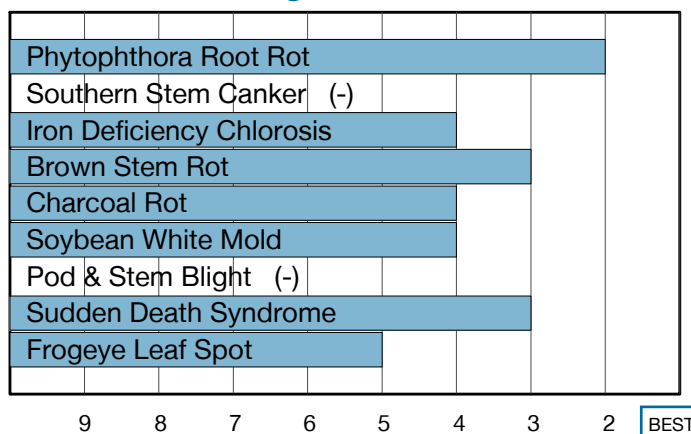
Peking SCN Resistance Combined with Exciting Yield Potential

- Solid PRR field tolerance with an Rps1c/3a gene stack
- Great top-end yield potential on highly productive soils
- Great standability with nice plant height

Plant Characteristics

Plant Height	Medium
Canopy/Plant Type	Medium
Branching	Moderate
Growth Habit	Indeterminate
Flower Color	Purple
Pubescence Color	Gray
Pod Color	Tan
Hilum Color	Buff
Chloride Sensitivity	Includer

Disease Ratings



Agronomic Traits

Emergence	3
Standability	2
Shatter Tolerance	2
Green Stem	2
Estimated Seed Size	Small
% Protein at 13% mst.	33.2
% Oil at 13% mst.	19.9
Narrow Rows	1
Wide Rows	1
Metribuzin Response	Best
Sulfentrazone Response	-

Diseases and Pests

Phytophthora Root Rot (PRR) Source	Rps1c, Rps3a
Soybean Cyst Nematode (SCN) Races	R1, MR3, MR5
(SCN) Source	Peking
Root Knot Nematode (RKN) Incognita	-

Adaptation to Soil Types

Drought Prone	Best
High pH*	Fair
Highly Productive	Best
Moderate/Variable Environments	Best
Poorly Drained	Good

For more info or to view product performance data: goldenharvestseeds.com 1-800-944-7333

1-9 Scale: 1 = Best, 9 = Worst, (-) = Not Available.
Adaptation and Responses: Best > Good > Fair > Poor.

LIBERTY LINK

Seed products with the LibertyLink® (LL) trait are resistant to the herbicide glufosinate ammonium, an alternative to glyphosate in corn and soybeans, and combine high-yielding genetics with the powerful, non-selective, postemergent weed control of Liberty® herbicide for optimum yield and excellent weed control.

* Represents an assessment of stand establishment, chlorosis severity and yield performance
Ratings are based on interpretation of statistically analyzed results of studies conducted by Syngenta and may change as additional data are gathered.
© 2024 Syngenta. Golden Harvest® soybean varieties are protected under granted or pending U.S. variety patents and other intellectual property rights, regardless of the trait(s) within the seed. The ENLIST E3® soybean and LibertyLink® traits may be protected under numerous United States patents. It is unlawful to save soybeans containing these traits for planting or transfer to others for use as a planting seed. Only 2,4-D choline formulations with Colex-D® Technology are approved for use with ENLIST E3® soybeans. ENLIST E3® soybean technology is jointly developed with Corteva Agriscience LLC and MS Technologies LLC. The ENLIST trait and ENLIST Weed Control System are technologies owned and developed by Corteva Agriscience LLC. Colex-D®, ENLIST® and ENLIST E3® are registered trademarks of Corteva Agriscience LLC. LibertyLink®, Liberty® and the Water Droplet logo are registered trademarks of BASF. Trademarks are the property of their respective owners.